



MINISTRY  
OF  
LOCAL GOVERNMENT,  
DECENTRALISATION AND  
RURAL DEVELOPMENT

**Gulf of Guinea Northern Regions Social Cohesion (SOCO) Project**

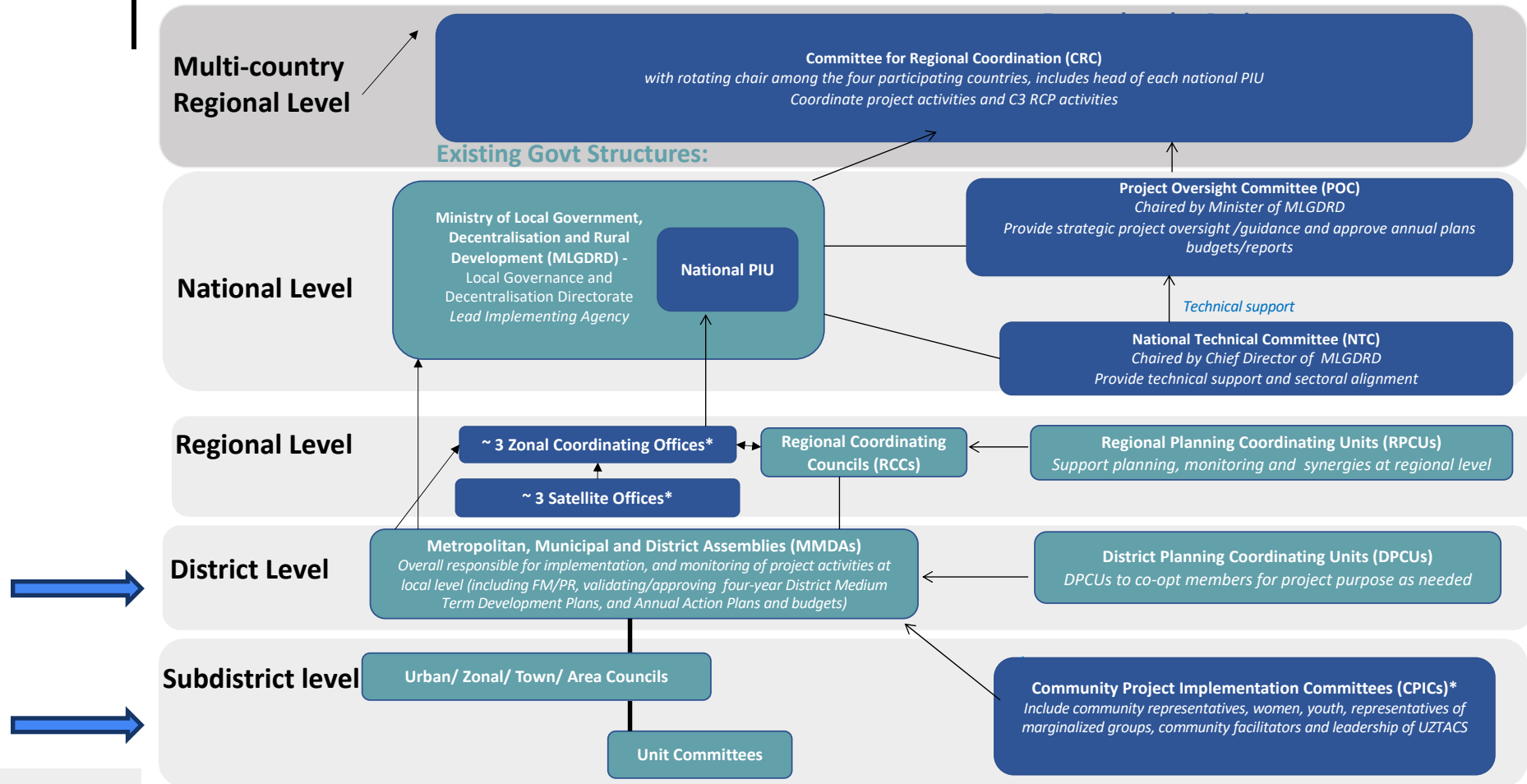
**SELECTION AND ROLE OF COMMUNITY FACILITATORS AND COMMUNITY  
PROJECT IMPLEMENTATION COMMITTEES**

# SUBPROJECT IMPLEMENTATION STRUCTURES

- ❖ Cluster of communities to implement subprojects, with each MMDA creating between three (3) to four (4) clusters ---**this is confusing-----delete**
- ❖ Total of eight (8) to twelve (12) neighbouring communities per cluster – **comment (this was revised in the PIM—refer and review)**
- ❖ Community Project Implementation Committees (CPICs) to be formed from inception in each cluster of communities to facilitate all aspects of project implementation



# SUBPROJECT IMPLEMENTATION STRUCTURES



# COMPOSITION OF CPICs

The MMDA, with the facilitation of the CFs, through consultations, will assist the DAs in the formation of the CPICs per the steps below;

- ❖ Each community in the cluster will select **two (2) community representatives (at least one female and one of whom will be a youth**, i.e., aged from 18-35 years old).
- ❖ Select **additional representatives (not exceeding four persons)** from **vulnerable groups** (e.g. **pastoralists, persons with disability, etc.**) within the Cluster who may not be already represented.
- ❖ **CFs will serve as ex-officio members** of the CPIC without voting rights.
- ❖ The **Chairman and Secretary** of the beneficiary UZTACs and Assembly Member(s) within the cluster will be invited to participate in CPIC meetings as advisors.



# SELECTION OF COMMUNITY REPRESENTATIVES TO CPIC

The two community representatives to the CPIC will be selected using the steps below;

- ❖ Each community will **hold a meeting to explain the roles of CPIC members** to the entire community.
  
- ❖ State and explain the **criteria for selecting the two (2) representatives**:
  - have demonstrated ability to mobilise the community and vulnerable groups.
  - have integrity, be honest and trustworthy.
  - not be partisan and does not hold any political position.
  - be able to commit time to participate in the meetings and trainings.
  - be prepared to serve as a volunteer since there will be no remuneration except transportation allowance for stipulated official assignments, including meetings.
  
- ❖ Once selected, the **names of the two (2) representatives will be submitted to the MMDA for validation.**



# TENURE OF THE CPICs

## The CPICs will have the mandate below;

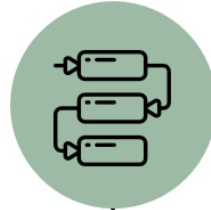
- ❖ The CPIC at its first meeting will elect a Chairperson, Secretary and Organiser (at least one of whom should be a female) upon formation.
- ❖ The CPIC will meet quarterly to discuss project implementation-related issues. Other meetings may be held, as approved by the DA and ZCO.
- ❖ CPIC shall meet a maximum of six (6) times in a year.
- ❖ The CPIC membership shall serve a term of 2 years with the possibility of being re-elected to serve for another term.



# ROLE OF CPICs

## 1. Subproject Prioritisation

Prioritise communities and sub-projects for implementation



## 2. Subproject Appraisal

Assist in sub-project appraisal, validation and climate risk assessment



## 3. Resource Mobilisation

Mobilise community resources



## 4. Liaison Activities

Liaise with the DAs, ZCOs and CSOs on sub-project investments



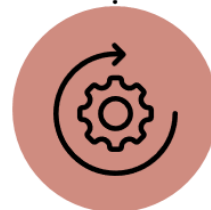
## 5. Grievance Resolution

Assist in the resolution of grievances



## 6. Operation & Maintenance

Prepare operations & maintenance plans with the support of the DA



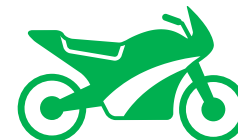
# WHO ARE THE COMMUNITY FACILITATORS?



Two (2) CFs are recruited per cluster; one (1) for infrastructure subproject and the other for LED and social cohesion activities



Clusters are a collection of neighbouring communities



Will be equipped with motorbikes to ease their movements to communities within the clusters



Will be provided with tablets to help with data collection activities



# CRITERIA FOR SELECTION OF CFs

1. Must be between 25 and 55 years.
2. Must have at least secondary school education.
3. Have community mobilisation skills and willingness to serve the community.
4. Have knowledge and awareness of the various groups that exist in the cluster and the local dynamics/social context.
5. Must reside within/near the cluster of communities.
6. Proficient in the use of digital tools.
7. Have experience with managing or participating in community development.



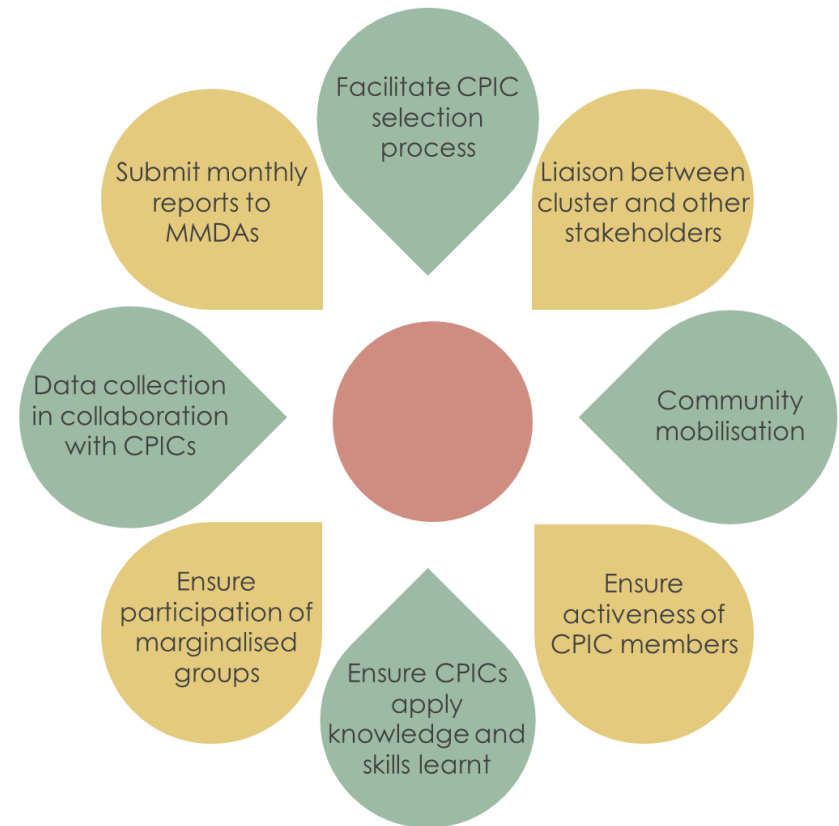
# CRITERIA FOR SELECTION OF CFs

8. Have integrity, be honest and trustworthy.
9. Must not be involved in any conflict, community-level disputes, violence, and criminal activity.
10. Must not be partisan and do not hold a political position.
11. Can speak the local languages in the cluster.
12. Proficiency in data collection and reporting would be an advantage.



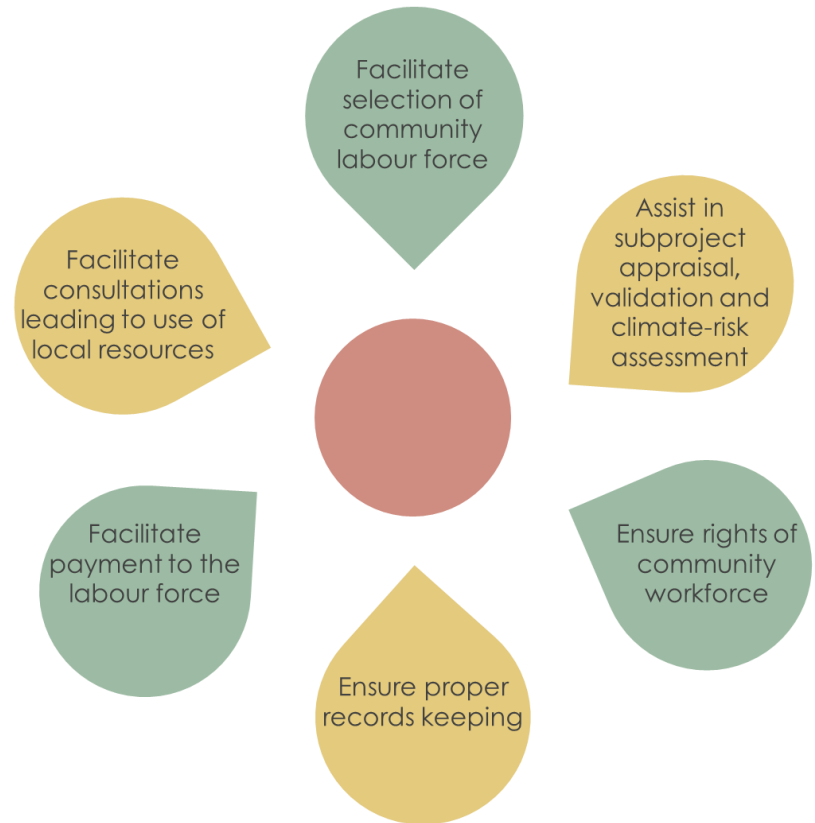
# ROLES AND RESPONSIBILITIES OF CFs

The Community Facilitators will perform these general roles and responsibilities:



# ROLES AND RESPONSIBILITIES OF CFs

In addition to the general roles and responsibilities, the CFs focusing on infrastructure will be responsible for the following:



# ROLES AND RESPONSIBILITIES OF CFs

The Community Facilitators focusing on non-infrastructure investments will have these additional responsibilities:

Work with Technical Facilitating Partners to coordinate market livelihood activities

Serve as Environmental and Social risk focal persons management (Social accountability forums and GR)

Work with youth groups and NGOs/CSOs to organise social cohesion activities



# THANK YOU



MINISTRY  
OF  
LOCAL GOVERNMENT,  
DECENTRALISATION AND  
RURAL DEVELOPMENT